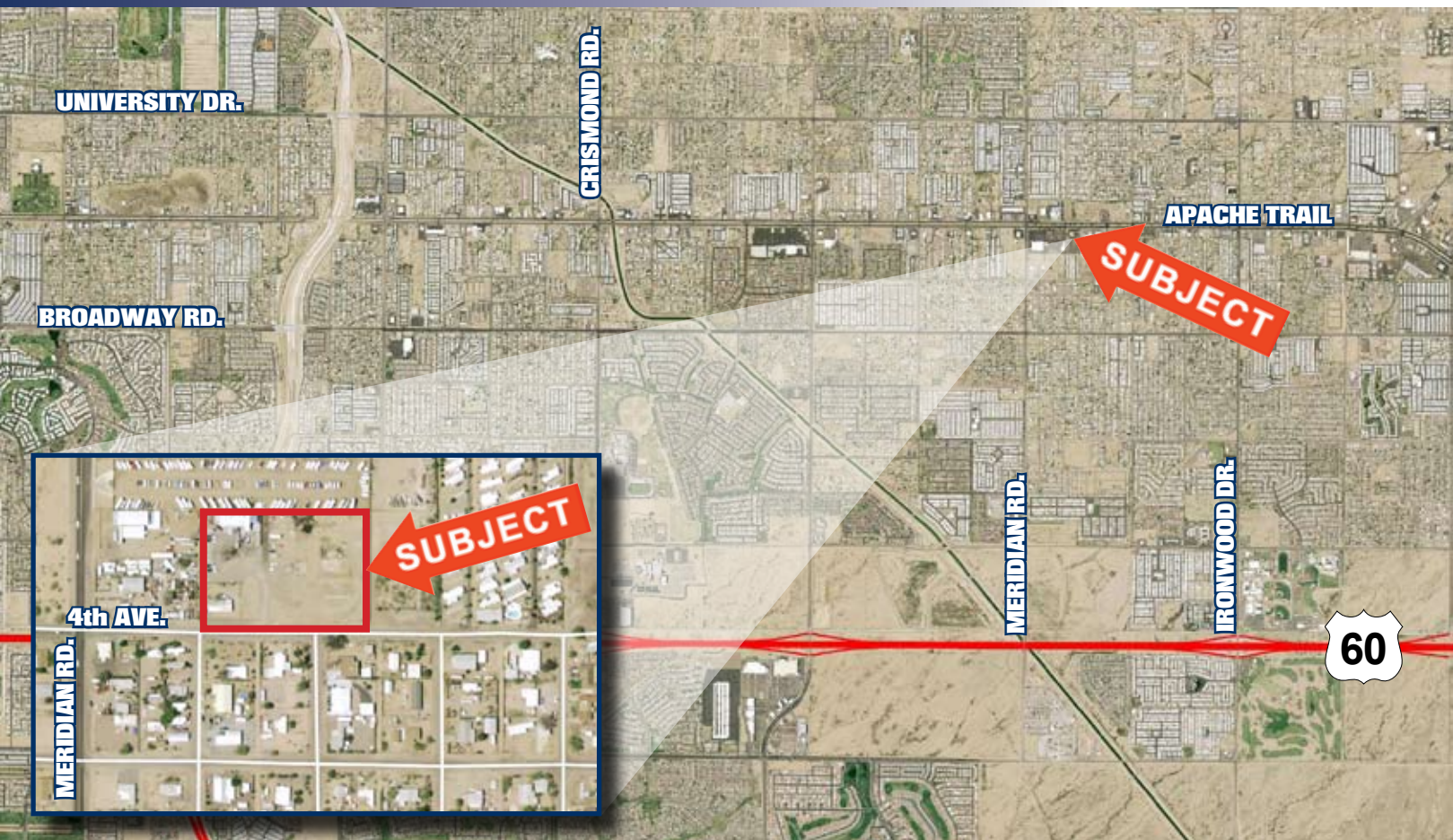


Small Building + 2 Acres FOR SALE



2990 West 4th Avenue, Apache Junction

PROJECT HIGHLIGHTS

- ±3,800 SF Office/Warehouse Building (800 SF Office)
- CI-1 Zoning, City of Apache Junction
- Fully Improved, Block Fencing Industrial
- Close Proximity to Apache Trail (Main St.) and Meridian
- Ideal Contractor yard, equipment storage, boat storage and mini-storage

FOR SALE AT \$575,000.00

For further information contact:

MARC PIERCE
602.954.3750

mpierce@lee-associates.com

www.lee-associates.com



Lee & Associates®
COMMERCIAL REAL ESTATE SERVICES
3200 E. Camelback Road, Suite 100
Phoenix, AZ 85018

"No warranty or representation is made to the accuracy of the foregoing information. Terms of sale or lease and availability are subject to change or withdrawal without notice."